



# YISHU 8 AWARD · CHINA

BEIJING · PARIS

# GENESIS Of YISHU 8 AWARD



YISHU 8, a not for profit organization dedicated to the arts, was created by Christine Cayol, a French writer and philosopher, and by Xue Yunda, a Chinese industrialist and art lover. In 2012 it moved into the buildings of the former Sino-French University. The center's mission is to help and support new Chinese and French creators through residency programs, and it organizes frequent exhibitions, conferences and concerts. It seeks to perpetuate the spirit of the Sino-French University and faith in its ideals of freedom, equality and fraternity. It aspires to bridge Eastern and Western arts and cultures.

Officially created in 2011, YISHU 8 Award · China was initiated by Henry-Claude Cousseau, President of the YISHU 8 Association, and former Director of the Ecole Supérieure Nationale des Beaux-Arts de Paris (the National Superior School of Fine Arts of Paris). The award has no commercial purpose; it is the fruit of a philanthropic endeavor, of the cultural vision that unites France and China, and of a demanding collective effort : professors, artists, art critics, philanthropists and the entire YISHU 8 team working together to reward the one who will be given the possibility to show his/her work at YISHU 8 through a solo exhibition, and finally go to Paris for a two-months art residency.

Through these programs of public interest, YISHU 8 aims to actively support young Chinese and French artists by extending to them a free creative platform, exhibitions and exchanges opportunities. It also aspires to promote an artistic dialogue between our two countries.

« We are convinced that helping creation and young talents open to new cultural worlds contributes towards building a more sensitive and sensible world. »



A brand reflects vision, memory, transmission and unceasing creation.

Today, Maison Guerlain has joined Maison YISHU 8 to embark on an adventure that heralds creation, beauty and transmission. Guerlain has partnered with the Prix YISHU 8 · Chine to offer the laureate the opportunity of a residency in Beijing followed by one in Paris at the Cité des Arts. If Guerlain's support of Prix YISHU 8 · Chine demonstrates its desire to contribute to artistic exchanges between France and China, it also goes beyond a mere philanthropic gesture to exemplify the brand's exacting concern for know-how, vision and singularity.

Maison Guerlain has always kept close contact with artists forward-looking and open to the world, they are a source of inspiration. For the past ten years, Guerlain has been a partner of FIAC (Foire internationale d'art contemporain), and has opened the doors of its store on the Champs Elysées to the works of famous artists: Pablo Picasso, Jeff Koons, Claude Lévêque, Jean-Michel Othoniel, Pierre et Gilles, Tony Brown, Liu Bolin, Louise Bourgeois...as well as Joana Vasconcelos, Xavier Veilhan. Guerlain also supports the Prize for Contemporary Drawing launched by the Daniel and Florence Guerlain Contemporary Art Foundation.

We are convinced that helping creation and young talents open to new cultural worlds contributes towards building a more sensitive and sensible world.

Christine Cayol  
Founder of YISHU 8





« It is precisely with a view to welcoming the future that Guerlain is glad to sponsor the artistic projects developed by YISHU 8 to promote Franco-Chinese culture and friendship . »

For nearly 190 years, the Maison Guerlain has been driven by an insatiable quest for Beauty. An exploration of aesthetes, linking us closely to the world of Arts, which has now been handed down to us. From the Jicky bottle made by Baccarat in 1889 to the Rouge G designed by jeweler Lorenz Bäumer in 2009 or the furniture of our boutiques, created in the middle of the last century by Jean-Michel Frank, Christian Berard or Alberto Giacometti, collaboration between the Maison Guerlain and the artists of the time has been extensive and encompasses, a wide range of disciplines : the sculpture with Robert Granai and Nathalie Decoster, the painting with JonOne and l'Atlas, the photography with Liu Bolin and Vik Muniz, the design with Ora Ito and Hervé van der Straeten...

We share with the world of Art the same aspiration towards the Sublime, this perfection that we sometimes manage to attain when the work becomes a masterpiece. It then bears witness to the history of its time, as Creation is always a gamble on the future.

And it is precisely with a view to welcoming the future that Guerlain is glad to sponsor the artistic projects developed by YISHU 8 to promote Franco-Chinese culture and friendship.

What could be a more fitting tribute by the Master perfumer to these arts with an intense emotional charge ?

What finer marriage than painting and sculpture with fragrance, all three evocative of harmony?

What more beautiful illustration of the incessant movement of creation ?

Artists, experts in the art of creating delight, and Guerlain are driven by the same passion, because Beauty is a matter of everyone.

Laurent Boillot  
CEO of Guerlain

**GUERLAIN**  
PARIS

# PREVIOUS NOMINATORS



**HE Guiyan**  
Curator, art critic

**QIU Zhijie**  
Artist, curator, Director of  
Experimental Art  
Department of CAFA



**PEI Gang**  
Journalist of Artron.net



**WANG Huangsheng**  
Artist



**QIAO Zhibing**  
Art collector  
Founder of QIAO Space

**CAO Dan**  
Former Publisher of  
"LEAP" and "The Art  
Newspaper China"



**ZHANG Zikang**  
Director of CAFA Museum



**WANG Weiwei**  
Curator of Museum of  
Contemporary Art,  
Shanghai



**XU Bing**  
Artist



**XU Zhen**  
Artist, curator, founder of  
MadeIn Company



**ZHAN Wang**  
Artist



**YAN Yan**  
Deputy Director of  
Today Art Museum





# PREVIOUS JURY MEMBERS



**HUANG Du**  
Art critic, curator



**Henry-Claude COUSSEAU**  
President of YISHU 8 Association,  
Former director of ENSBA

**SU Xinping**  
Artist,  
Vice-President of CAFA



**Tony BROWN**  
Artist,  
Professor at CAFA and ENSBA

**MA Gang**  
Professor at CAFA



**Christine CAYOL**  
Founder of YISHU 8



**Larys FROGIER**  
Director of Rockbund Art  
Museum



**TAN Ping**  
Artist



**JIN Hua**  
Professor at CAFA



**Philip Tinari**  
Director of Ullen Center  
for Contemporary Art



**SUI Jianguo**  
Artist

# They said ...



“The exchange of arts between China and France has a long history. In this ever-changing world, what the younger generations of artists think and do brings us the freshest, spring-like flavor of the development of art. Together with YISHU 8, we aim to push forward the artistic exchanges between China and France.”

**FAN Di'an**  
President of CAFA

“YISHU 8 is located at the historical site of former Sino-French University. I think it consciously assumed a responsibility to promote the Sino-French cultural exchanges, focusing on the arts and the creativity.”



**SUI Jianguo**  
Artist

“YISHU 8 Award is different from many domestic awards, it has a real impact in promoting the exchange of young artists in China and France. I find this particularly important. There is a vision that is more international and constructive than some domestic awards.”



**HE Guiyan**  
Curator, art critic

“YISHU 8 Award is unique, is has no interest appeal. It is very important for young people as they just start go out into the world and would need all kinds of help.”



**SU Xinping**  
Vice-president of CAFA

“An young artist's experience and understanding of the society and politic might not yet reach a very mature point. During this period, the possibility to spend two months in France, would be a great help for him to extend his international perspective.”



**CAO Dan**  
Former Publisher of “LEAP” and “The Art Newspaper China”

# They said ...



“From my point of view, the biggest difference between YISHU 8 Award and other artistic awards is its sustainability. I was laureate in 2014, after a solo exhibition at YISHU 8, I had the chance to go to Paris for an art residency in the Cite des Arts in Paris for two months in 2015. In 2017, I was again invited to the Nouvel Institut Franco-Chinois in Lyon for a small exhibition. For young artists, a sustained support is very important. It’s a process of growing together.”

**PENG Yong**  
Laureate in 2014

“ I find it very effective the way how YISHU 8 support the artists. Such as financial support, venue support etc - everything focusing on the artist, so that I can accomplish a project and eventually show the result through a solo exhibition.”

**WANG Enlai**  
Laureate in 2014



“YISHU 8 is protecting the creativity of artists. It gives you enough time, space and patience for a whole new exploration. ”

**GENG Xue**  
Laureate in 2016







# **PREVIOUS FINALISTS' EXHIBITIONS**

**2015-2017**



FINALISTS 2017



CAO Yu HU Yiping ZHANG Ruyi

Curator of the finalists' exhibition :

XIA Yanguo

Laureate : ZHANG Ruyi



Top left : Zhang Ruyi's work  
Bottom left : Cao Yu's work  
Right : Hu Yiping's work



**FINALISTS 2016**



**CAI Lei GENG Xue WANG Ge**

Curator of the finalists' exhibition :

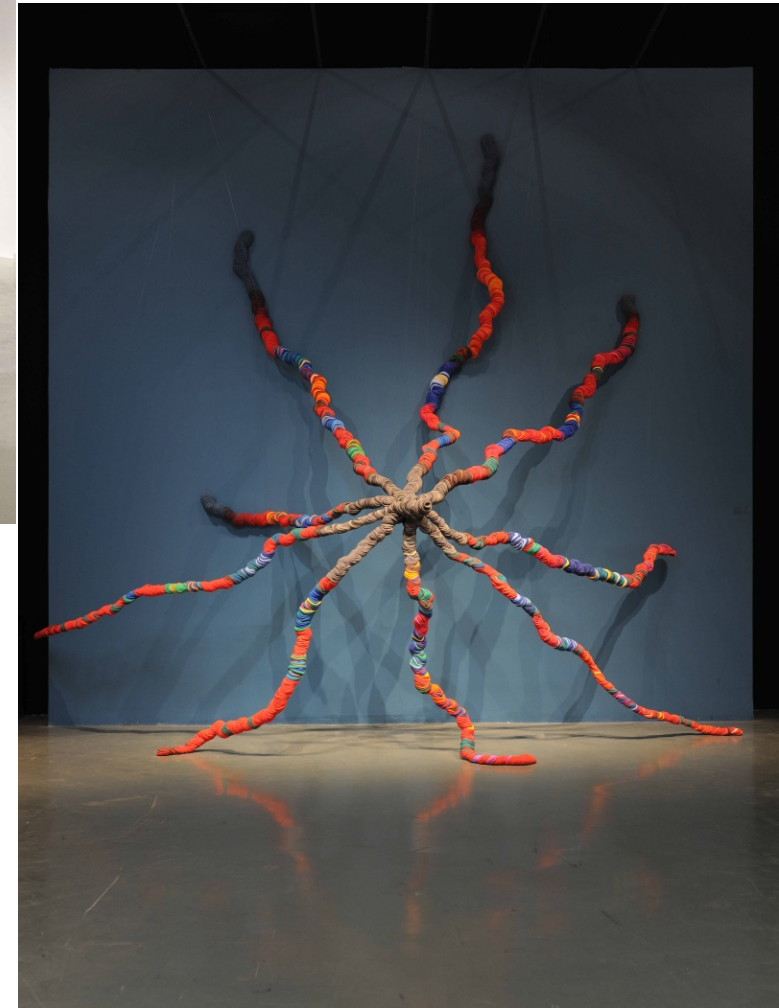
HE Guiyan

Laureate : GENG Xue



## FINALISTS ARTISTS

Du Yingqi, Fu Xiaojie, Hu Wendan, Huang Wenya, Liu Chang,  
Liu Haichen, Li Yuanchen, Meng Xiangxia, Shi Xiang,  
Wang Enlai, Wang Xudong, Xing Gang, Xu Sijin, Zhou Hong



**LAUREATES 2015**  
**WANG Enlai, FU Xiaojie**

Curator of the finalists' exhibition  
Tony Brown





**PREVIOUS LAUREATES**



# GENG Xue

A la recherche du son

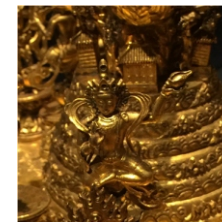
Solo exhibition in 2016



# GENG Xue

## Art residency in Paris in 2017

“ I was in the centre of the centre in Paris, Notre Dame de Paris right on the opposite, Louvre Museum in walking distance, as well as Shakespeare & Company, Centre Pompidou... Next to my door was the Seine, the subway station, the best bakery shop in Paris... An experience rich and unforgettable. ”





**WANG Enlai**  
**Movement / Motionless**  
Solo exhibition in 2015





# WANG Enlai

Art residency in Paris in 2016



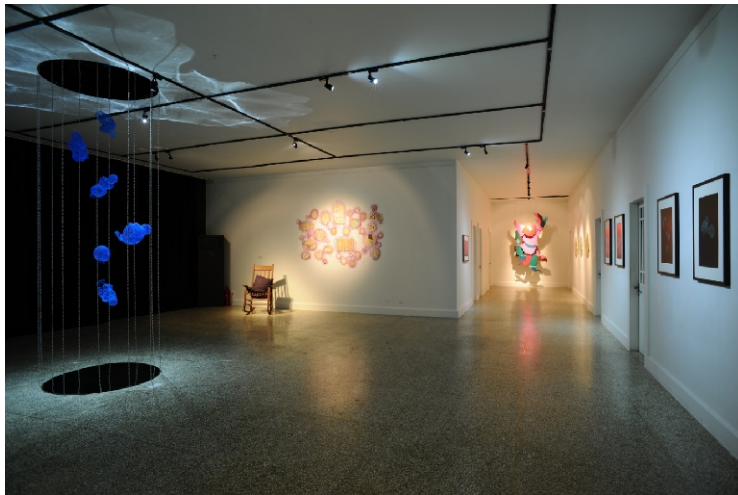
"Cite Internationale des Arts was founded in 1965. There are artists from all over the world residing in this white building with large windows. I had this residency thanks to YISHU 8 and the City of Paris. I don't have many chances to visit Europe, last time I was here only for a week and had a quick look of all the museums and famous sites, this residency allows me to explore the city in a much deeper dimension, and to feel the cultural atmosphere in everyday life."



FU Xiaojie

Former residence of Mrs. Wo

Solo exhibition in 2016





# FU Xiaojie

## Art residency in Paris in 2016



" My impression of Paris: This is really a place full of contradictions and surprises, it seems difficult to define it with a word or two, even if I spent two months I can hardly see the whole picture, maybe that's why Paris is considered as such a holy city to so many people."



## PENG Yong · BLUES

Solo exhibition in 2014



## OU Ming The Force of Heart

Solo exhibition in 2013



## LI Ying · INTERNAL

Solo exhibition in 2014



## JV Ting · Colors has the answer

Solo exhibition in 2013





# SELECTION PROCESS



## NOMINATION

**Deadline : December 20th, 2017**

**Each nominator nominates three chinese young artists**

Detailed requirements in followed pages

## FIRST SELECTION

**Around February 1st, 2018**

Once all the documents of nominated artists have been collected, the Jury members will review each document carefully during a week, before gathering at YISHU 8 for a Jury meeting, during which they will vote to choose three artists whose work will be exhibited at YISHU 8 in April-May 2018.

## FINAL CHOICE

**April 21st, 2018 : Opening of the finalists' exhibition & Award ceremony**

On the opening day of the three artists' group show, jury members will vote to select the final laureate.

The vote result will be announced during the opening ceremony.



# REWARDS



- **30,000 RMB** (pre-tax)
- **Solo exhibition** at YISHU 8 (one month duration)
- **Artistic documentary film** about 5 minutes
- **Two months art residency in the centre of Paris** Cite International des arts de Paris.
- **Round-trip Ticket** Beijing - Paris
- **Basic french language training** reimbursement for 20 hours french course
- **Other opportunities** with recommendations of YISHU 8, the laureate has the opportunities to be invited for a solo exhibition or residency in Lyon (Nouvel Institut Franco-Chinois), or further cooperations with important french/european Art institution and brands.



# NOMINATION INSTRUCTIONS



Each nominator nominates **three artists** according to following requirements :

**Chinese Nationality · lives in China · Under 35 years old**

No limitation for work type.

**Deadline of the nomination : December 30th, 2017**

Nominator must provide the following information while submitting their nominations :

- **Basic informations of the nominated artists**

name, gender, birth year, city of residence. telephone number and Email address

- **Nomination reasons**

Written by the nominator his/her-self, elaborating his point of view about each nominated artist, from the risk-taking to the singularity of his/her work, in both professional and subjective way.

## **Need-To-Know**

- Artists who have been nominated in previous years are not in this year's nomination range, unless if he/her has accomplished new projects during the past two years.

- **Please do consider the peculiarity of this award (philanthropic, cultural exchanges between China and France). The artist's human quality, open-mindedness, as well as adaptation ability will be considered during the selection.**



**Project Manager : Jacqueline LIU**

TEL: 186 0199 6282

Email: [jacqueline@yishu-8.com](mailto:jacqueline@yishu-8.com)



**Media contact : Vicky ZHANG**

TEL: 158 0123 3901

Email: [vickyzhang@yishu-8.com](mailto:vickyzhang@yishu-8.com)



**New media : CHENG Ran (Lilly)**

TEL: 136 9925 6169

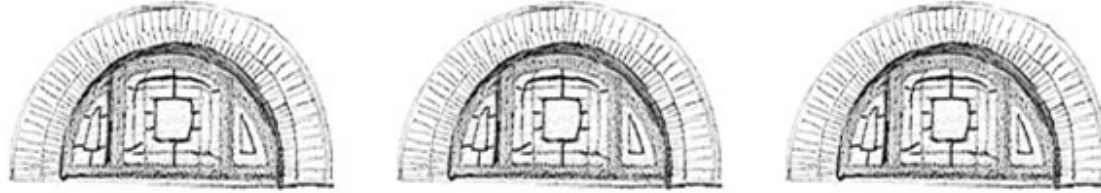
Email: [chengran@yishu-8.com](mailto:chengran@yishu-8.com)



**YISHU 8 CONTACTS**







With the support of

**GUERLAIN**  
**PARIS**



YISHU 8 - Former Sino-French University  
No. 20 (Jia) Donghuagnchenggen Bei Jie, Dongcheng District, Beijing 100010  
+86 10 6581 9058 | [Contact@yishu-8.com](mailto:Contact@yishu-8.com) | [www.associationart8.fr/](http://www.associationart8.fr/)